

Offices

Education

Museums

Retail

Libraries



# Evolution COMMERCIAL FLOORING

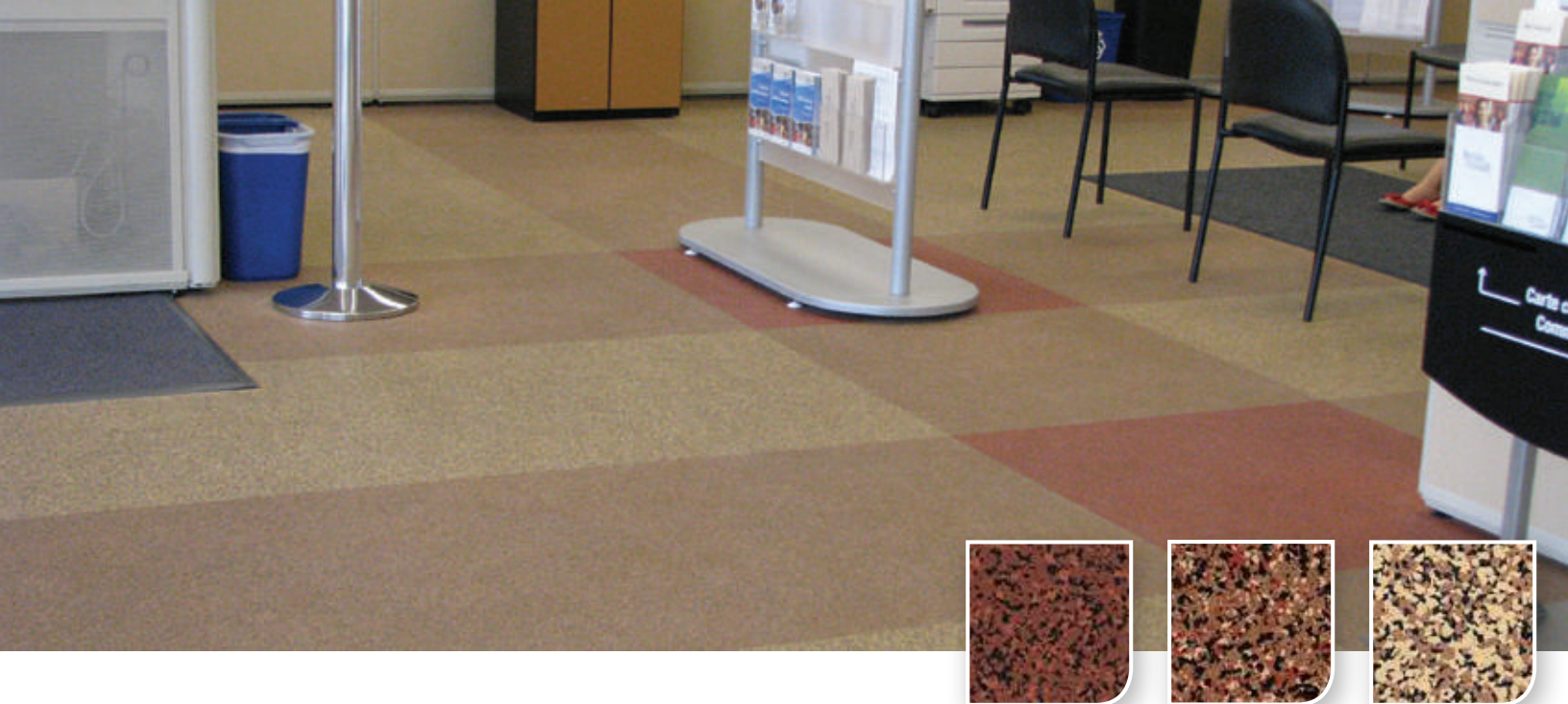
by dinoflex



made flat  
stays flat™  
by dinoflex

guaranteed  
**NEVER TO CURL**





## Evolution Commercial Flooring

Evolution Commercial Flooring is one of the most versatile, durable and attractive recycled rubber products that Dinoflex has to offer. Designed to provide the look of more traditional commercial surfaces such as carpet, stone and even cork, Evolution tile can be used in a variety of interior applications and will outlast many types of traditional flooring products. When you combine these striking color blends with high traction, underfoot comfort and superior sound reducing properties, this hardwearing, sustainable rubber tile flooring is perfect for a wide range of commercial applications. Evolution Tiles are stain resistant and remarkably easy to maintain without the use of harsh chemicals. These precision water-jet cut tiles are easy to install and come in straight edge, glued in place or a fully reversible interlocking format.

### Features:

- Unique color blends
- Custom designs
- In-room sound reduction
- High-traction even when wet
- Easy color customization
- Floor Score certified for indoor air quality
- Long lasting with 10-year warranty

### Applications:

- Commercial Retail
- Staff Lounges
- Call Centers
- Offices
- Schools
- Museums
- Libraries
- Community Centers





Custom Design:

Dinoflex water jet technology is used to create graphic statements and colorful patterns that are both functional and visually appealing, adding a contemporary flair to modern interior design. Display company logos and branding in a strategic location or create play and learning areas for children. Dinoflex proudly introduces EVO Patterns, created using vivid colors and graphic combinations to dramatically change the look of your space. Contact your Dinoflex representative to learn more about how these elements can brighten up your next project!



Custom Color Mixing



60% Black

+



20% Purple

+



15% Turquoise

+



5% Royal Blue

=



Contact your sales rep for more information.

**Note:** Please select colors based on actual samples. Variation in UV Stability can occur in custom color mixes.

Custom Colors:

- Available for square cut and interlocking tiles.
- Create your own custom floor colors. The following colors are available for custom design:

 <div>Red</div>	 <div>Blue</div>	 <div>Beige</div>	 <div>May Green</div>	 <div>Purple</div>	 <div>Orange</div>	 <div>Grey</div>	 <div>Brown</div>
 <div>Hot Tamale</div>	 <div>Royal Blue</div>	 <div>Eggshell</div>	 <div>Pastel Green</div>	 <div>Blue Grey</div>	 <div>Earth Yellow</div>	 <div>Ash Grey</div>	 <div>Sepia Brown</div>
 <div>Rose</div>	 <div>Ultra Marine Blue</div>	 <div>Green Beige</div>	 <div>Signal Green</div>	 <div>Pine Green</div>	 <div>Yellow</div>	 <div>Fawn</div>	 <div>Charcoal</div>
 <div>Heather Violet</div>	 <div>Capri Blue</div>	 <div>Aqua</div>	 <div>Turquoise</div>	 <div>Reed Green</div>	 <div>Khaki</div>	 <div>Pearl</div>	



## Standard Colors

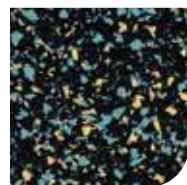
### Evo50



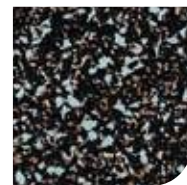
Casino Royale  
514E44



Dream Catcher  
514E46



Fire Fly  
014E41



Moon Beam  
014E42



Purple Rain  
514E45



Rain Forest  
514E43



Sapphire Haze  
514E62



Smoky Azure  
514E63



Spanish Moss  
514E58



Stone Ground  
014E54

### Evo60



Autumn Whisper  
014E416



Black Ice  
004E74



Brush Fire  
004E66



Burning Embers  
014E68



Cracked Pepper  
004E10



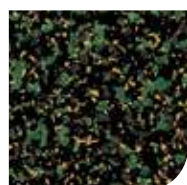
Dogwood  
014E70



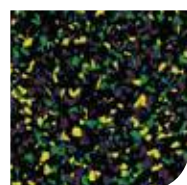
Driftwood  
001E73



Flamenco  
014E82



Irish Moss  
014E59



Mardi Gras  
014E83



Mesquite  
004E50



Molten Lava  
014E67



Muskwood  
004E72



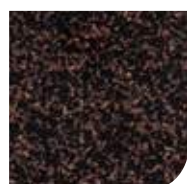
Pixie Moss  
014E60



Rio Grande  
004E81



Rip Tide  
014E89



Rosewood  
001E96



Sage  
014E474

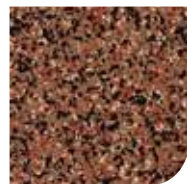
### Evo70



Adobe  
004E51



Arctic Night  
014E88



Baked Clay  
001E53



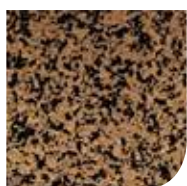
Corkwood  
014E79



Cotton Candy  
014E380



Firestorm  
014E95



Muddy Water  
014E52



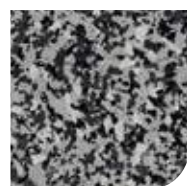
Nordic Fog  
004E25



Spun Silver  
014E65



Twilight Mist  
014E91



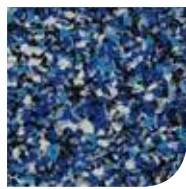
Wind Chill  
014E90



# Evo80



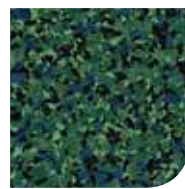
Bell Pepper  
014E15



Blueberry Twist  
014E99



Calypso Blue  
014E97



Calypso Green  
014E13



Calypso Red  
014E93



Clear Waters  
014E11



Glacier Ice  
014E48



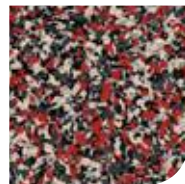
Grape Twist  
014E27



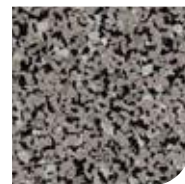
Green Pepper  
004E14



Harbor Mist  
014E98



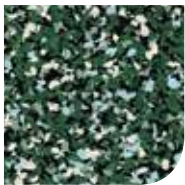
Hot Pepper  
014E92



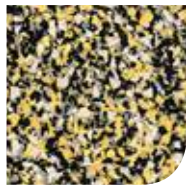
Iceberg  
004E84



Icicles  
014E78



Jalapeno Pepper  
014E86



Lemon Pepper  
014E22



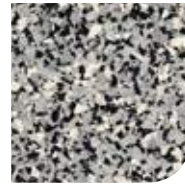
Niagara Mist  
014E77



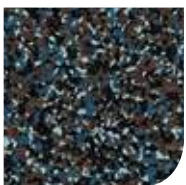
Plum Twist  
014E12



Sandlewood  
001E80



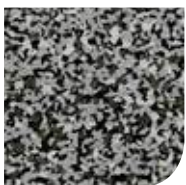
Snow Drift  
014E75



Universe  
014E385



Wheat  
004E55

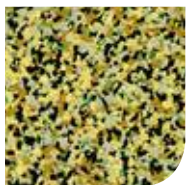


Winter Green  
004E26

# Evo90



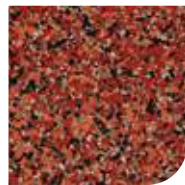
Banana Split  
014E705



Yellow Pepper  
014E706



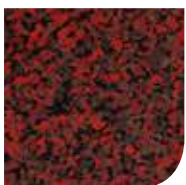
Fireweed  
014E19



Fireworks  
014E87



Hot Salsa  
014E69



Red Pepper  
014E94



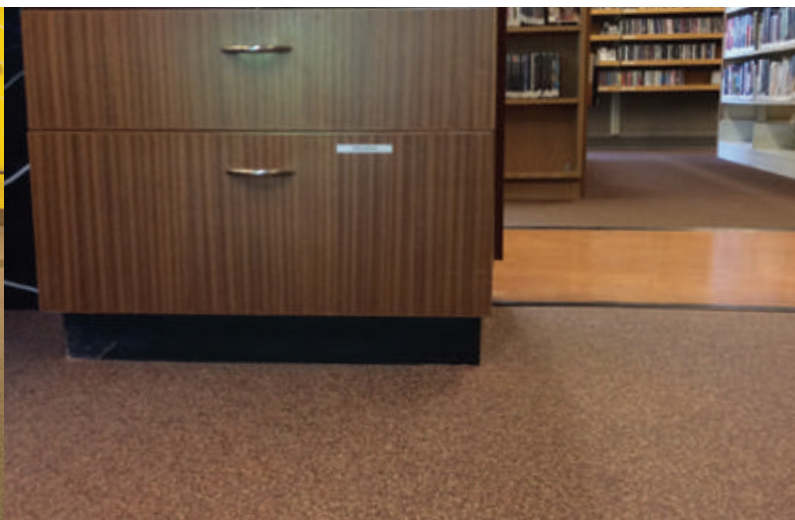
Sunflower  
014E56



Sweet Pepper  
014E16



Tidal Pool  
014E85



**Sizes:**

- Interlock tile – 8mm, 9mm only
- Square Edge Tile – 4mm, 5mm, 6mm, 7mm, 8mm, 9mm

**Evolution Commercial Flooring Technical Data**

TEST	DESCRIPTION	UP TO 50% COLOR	OVER 50% COLOR
AATCC 134-06	Electrostatic Propensity	POS 1.6 KV (up to 30% Color only)	N/A
ASTM C423	Sound Absorption/Noise Reduction Coefficient	N/A	4mm 0.05 6mm 0.05
ASTM C501	Taber Abrasion (H-22)	0.8% wt. Loss	4% wt. Loss
ASTM D2047	Static Coefficient of Friction (James Machine Method)	Dry 1.04, Wet 1.05	Dry 0.85, Wet 1.01
ASTM D2240	Hardness Short A Durometer	64 - 65 Indentation	59 - 62 Indentation
ASTM D3676	Density Foam Test	66.0 lbs/cu. ft.	78.3 lbs/cu. ft.
ASTM D395B	Compression Set Under Force	96.3% Recovered	95.3% Recovered
ASTM D412	Tensile Strength	290.2 lbs/sq. in.	186 to 292.2 lbs/sq. in.
ASTM D5116	Material Emissions - VOC	Pass	Pass
ASTM E492	Impact Sound Transmission	4mm - IIC 57 8mm - IIC 59	4mm - IIC 57 8mm - IIC 59
ASTM F137-03	Flexibility	N/A	6mm Mandrel PASS
ASTM F150 (NFPA 99)	Electrical Resistance: • Surface to Surface • Surface to Ground	1.5 × 10 <sup>10</sup> ohms (average) 4.6 × 10 <sup>10</sup> ohms (average)	1.9 × 10 <sup>11</sup> ohms (average) 3.9 × 10 <sup>11</sup> ohms (average)
ASTM F1914-98	Short Term Indentation	.025 inch (6.0%) Loss	
ASTM F1914-98	Residual Indentation	.007 inch (1.7%) Loss	
ASTM F970-87	Static Load (1000 lbs)	.000 inch (0.0%) residual compression	.042 inch (10.6%) residual compression
ASTM F925	Chemical Resistance	No Change	No Change
ASTM G21	Mildew Resistance	No Mildew after 14 days	No Mildew after 28 days
CALIFORNIA 01350	EVOLUTION Tile meets the VOC Emission requirements as a low-emitting material in the Collaborative for High Performance Schools rating system (CHPS Designed & CHPS Verified). Also the testing requirements are met for USGBC LEED for Commercial Interiors and for New Construction and Major Renovation, IEQ Credit 4.3 Low-Emitting Materials - Flooring Systems, Options 1 and 2		

**Please Note:** All measurements are subject to nominal variation.

**10 YEAR WARRANTY**

Dinoflex  
P.O. Box 3309  
5590 46 Ave S.E.  
Salmon Arm, B.C., Canada  
V1E 4S1

Toll Free: 1.877.713.1899  
Direct: 250.832.7780  
Email: info@dinoflex.com

www.dinoflex.com



made flat  
stays flat™  
by dinoflex

**guaranteed  
NEVER TO CURL**

Represented By:



Publication Date:  
September 2020