

Urban Field Collection



**PRODUCT DETAILS**

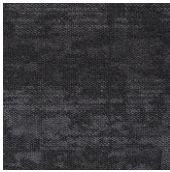
|                     |                                |
|---------------------|--------------------------------|
| Product Type        | <b>Carpet Tile</b>             |
| Collection name     | <b>Urban Field</b>             |
| Construction        | <b>Multi-level Loop</b>        |
| Fiber Type          | <b>100% Polypropylene</b>      |
| Gauge               | <b>1/12"</b>                   |
| Stitches per inch   | <b>10</b>                      |
| Pile Weight         | <b>20oz/Syd</b>                |
| Average Pile Height | <b>4mm±0.5mm</b>               |
| Dye Method          | <b>Solution Dyed</b>           |
| Backing Material    | <b>E+Bac (Bitumen Backing)</b> |
| Size                | <b>19.69"*19.69"(50*50cm)</b>  |
| Carton Quantity     | <b>5.98syd(5sqm)</b>           |
| Carton Weight       | <b>40.8lbs(18.5KG)</b>         |
| Installation Method | <b>Quarter-turn, Brick</b>     |

**TECHNICAL PROPERTY**

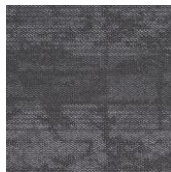
|                           |                                    |
|---------------------------|------------------------------------|
| Dimensional Stability     | <b>AACHEN Less than 0.2%</b>       |
| Static Propensity         | <b>AATCC-134 Under 3.5KV</b>       |
| Critical Radiant Flux     | <b>ASTM E648 Class II</b>          |
| Smoke Density             | <b>ASTM E662 Less than 450 DMC</b> |
| Colorfastness to Light    | <b>AATCC 16E More than 4-5</b>     |
| Colorfastness to Water    | <b>AATCC 107 More than 4-5</b>     |
| Colorfastness to Crocking | <b>AATCC 165 More than 4-5</b>     |

**SERVICE**

|            |                                  |
|------------|----------------------------------|
| Warranties | <b>Limited Lifetime Warranty</b> |
|------------|----------------------------------|



01



02



03



04

