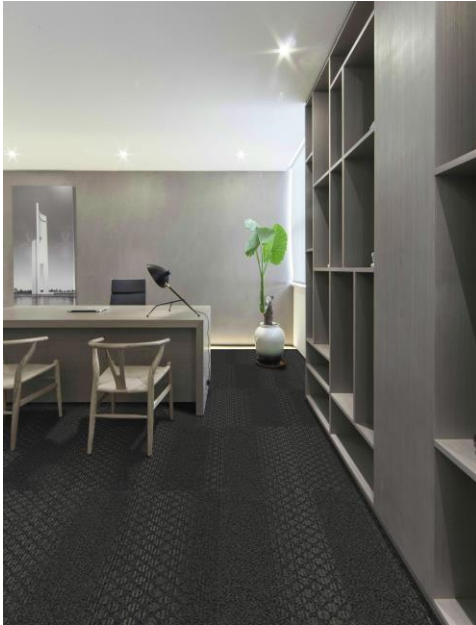


Seashells Collection

PRODUCT DETAILS

Product Type	Carpet Tile
Collection name	Seashells
Construction	Multi-level Loop
Fiber Type	Eterna SD Nylon
Gauge	1/12"
Stitches per inch	11
Pile Weight	20oz/Syd
Average Pile Height	4.0±0.5mm
Dye Method	Solution Dyed
Backing Material	PVC
Size	19.69"*39.37" (50*100cm)
Carton Quantity	5.98 syd (5sqm)
Carton Weight	55.12 lbs (25kg)
Installation Method	Ashlar Herringbone

TECHNICAL PROPERTY

Dimensional Stability	AACHEN Less than 0.2%
Static Propensity	AATCC 134 Under 3.5KV
Critical Radiant Flux	ASTM E648 Class I
Smoke Density	ASTM E662 Less than 450 DMC
Colorfastness to Light	AATCC 16E More than 4-5
Colorfastness to Water	AATCC 107 More than 4-5
Colorfastness to Crocking	AATCC 165 More than 4-5
Appearance Change-Hexapod	ASTM D5252 More than 3-4
Antimicrobial Activity Assessment	AATCC174 (Available)

SUSTAINABILITY

Environmental Product Declaration	EPD SDN 6/6.6 PVC Backing
Health Product Declaration	HPD v2.1.1 PVC Backing, 1000ppm

SERVICE

Warranties	Limited Lifetime Warranty
------------	---------------------------



02



03



04



05



07



11



Declare.